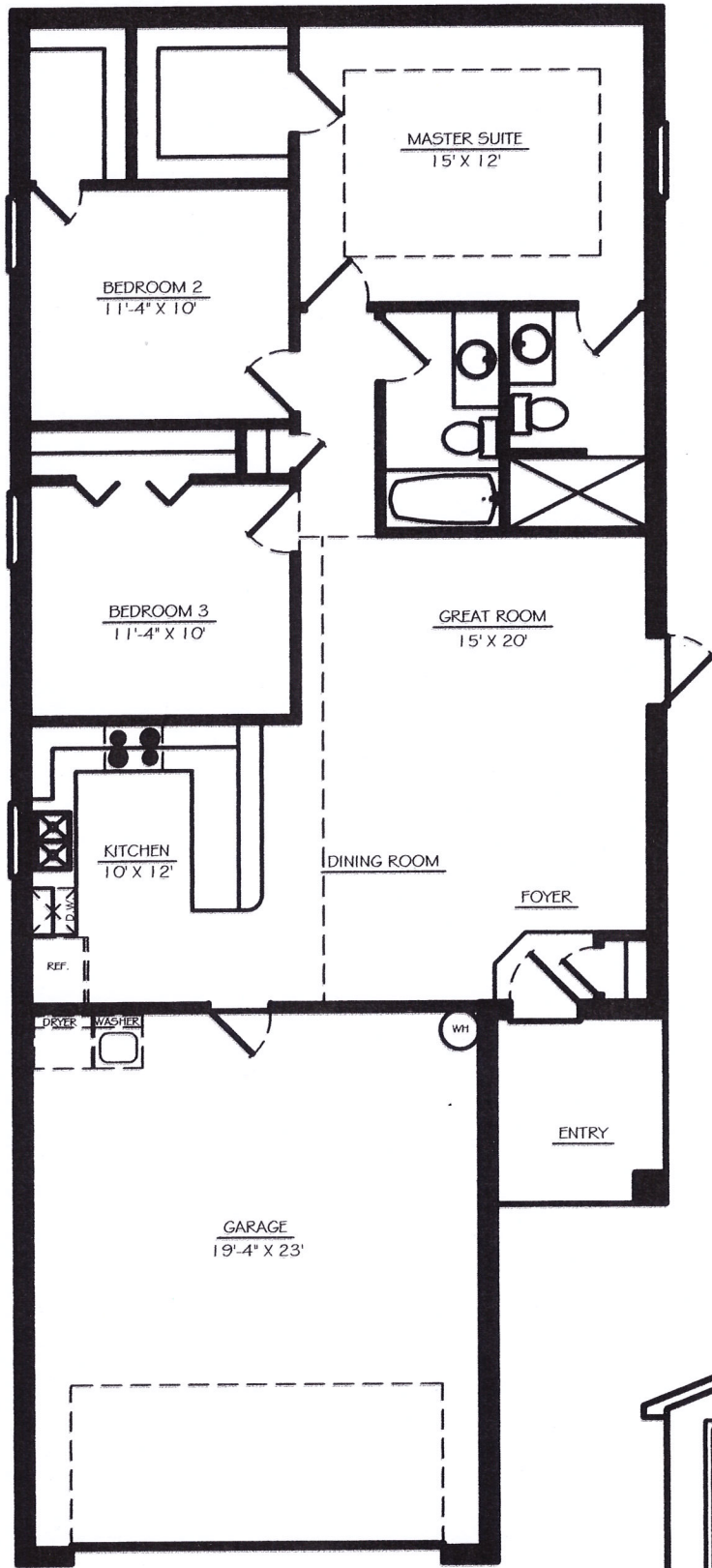


SIGNATURE HOMES
AND LAND DEVELOPEMENT OF FLORIDA,LLC.



AVALON MODEL

SQUARE FOOTAGE

1ST FLOOR	1207
GARAGE	489
ENTRY	59
TOTAL	1755

FLOOR PLAN



522 HWY. 92 AUBURNDALE, FLORIDA 33823 (863)-967-8527